



CITY OF PLATTSBURGH-CITY BEACH TOILET FACILITIES

CONSTRUCTION DOCUMENT SERVICES 100K

4 BEACH ROAD, PLATTSBURGH, NEW YORK 12501, CLAYTON COUNTY

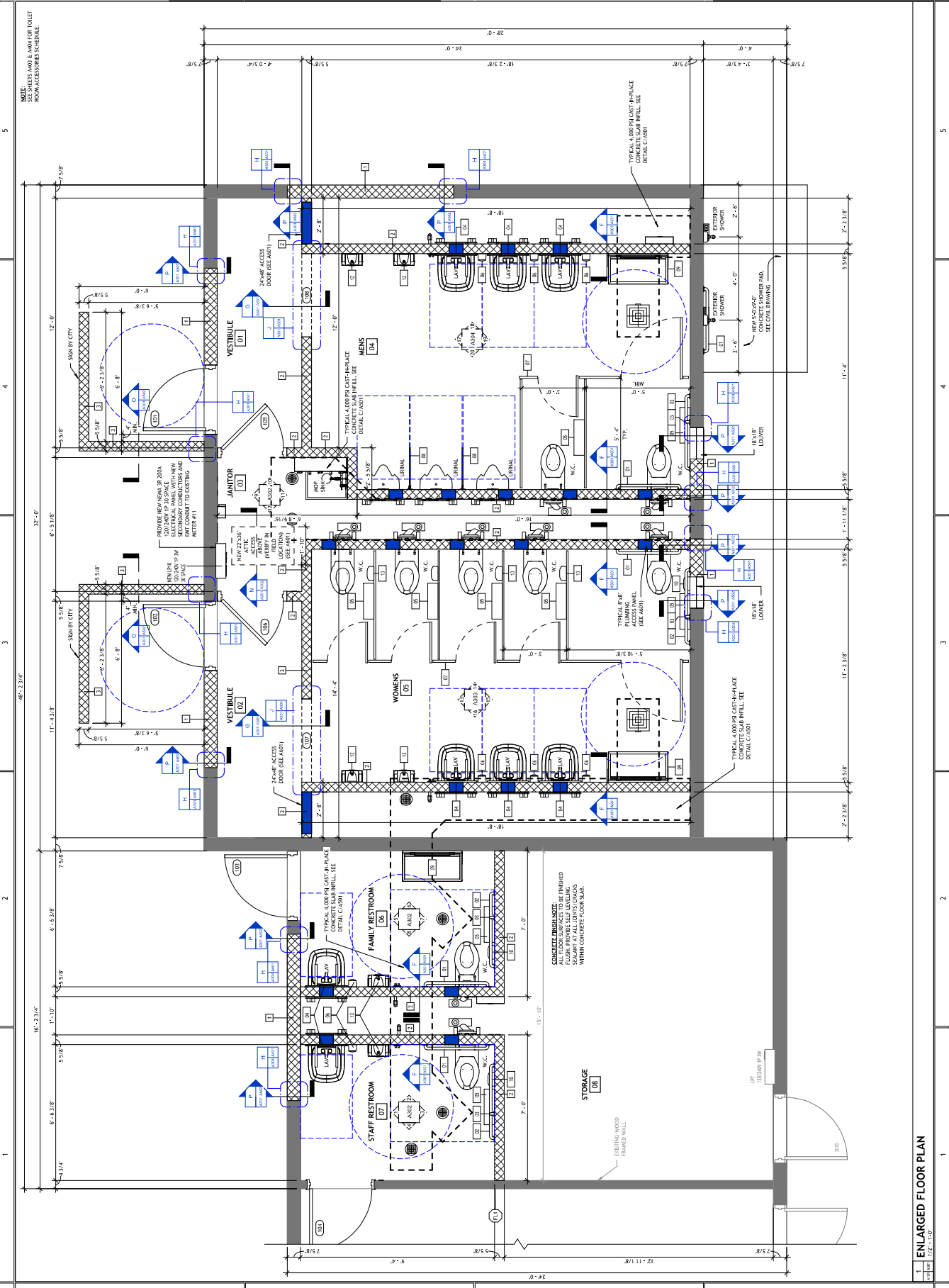


REVISIONS	
#	DATE

ENLARGED FLOOR PLAN

A301

PROJECT NO. 24001
DATE 09-10-24
DRAWN BY LFT
CHECKED BY SEC



NOTE: SEE SHEETS A400 & A401 FOR TOILET ROOM ACCESSORIES SCHEDULE.

CONCRETE FINISHES:
ALL FLOOR SURFACES TO BE FINISHED WITH POLISHED CONCRETE. SEAM AT ALL JUNCTIONS WITHIN CONCRETE FLOOR SLAB.

STORAGE 08
EXISTING WOOD FRAMED WALL

ENLARGED FLOOR PLAN
1/2" = 1'-0"



CITY OF PLATTSBURGH
 110 N. STATE STREET
 PLATTSBURGH, NY 12159
 (518) 532-1000
 www.plattsburgh.com

**CITY OF PLATTSBURGH-CITY BEACH
 TOILET FACILITIES**

**CONSTRUCTION DOCUMENT
 SERVICES 100%**

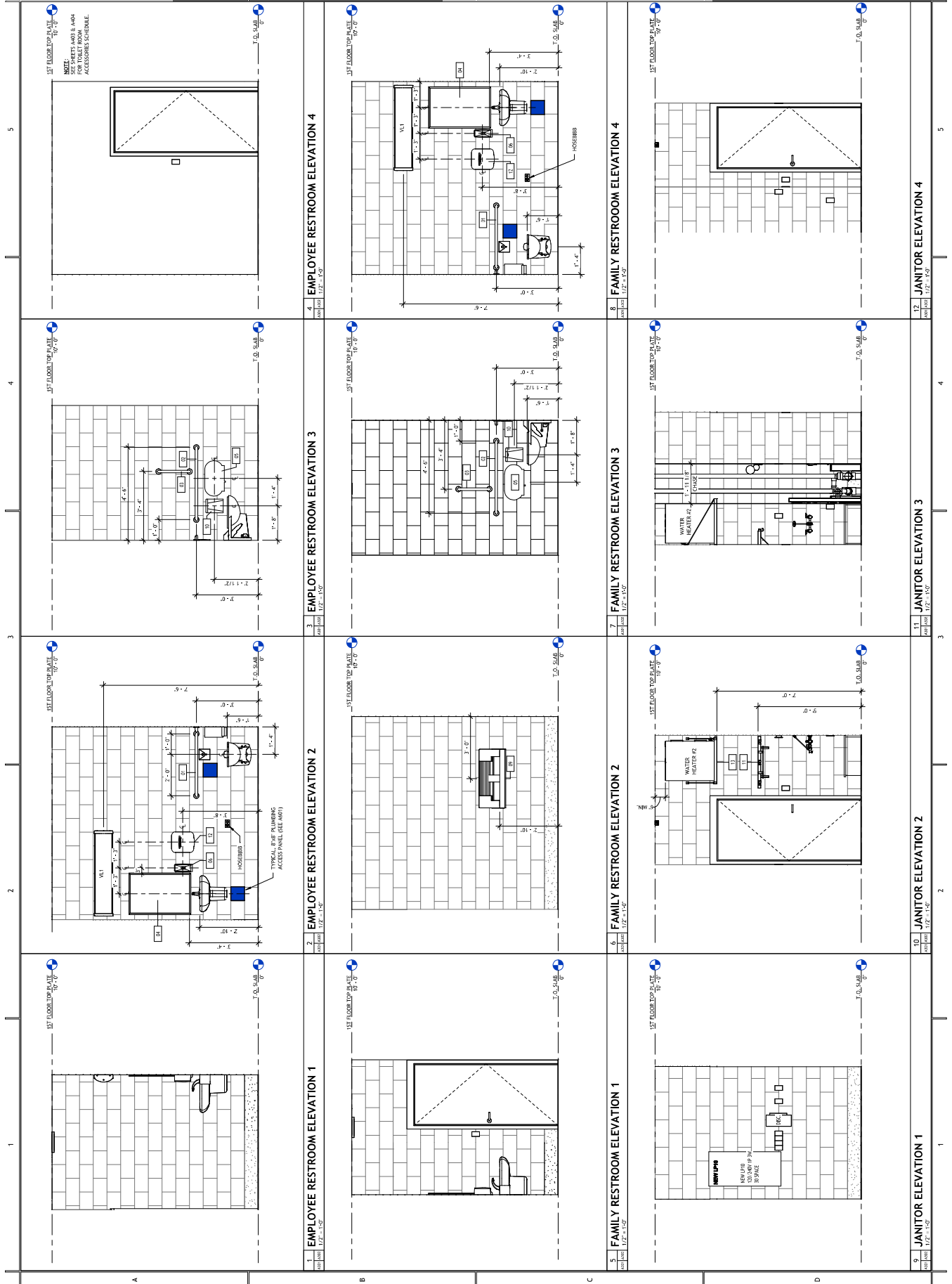


REVISIONS	
#	DATE

**INTERIOR
 ELEVATIONS**

A302

PROJECT INFO	
PROJECT NO.	DATE
24001	09-10-24
DESIGNER	
SWANBY	JCB
CHECKED BY	
SEC	



1 EMPLOYEE RESTROOM ELEVATION 1
2 EMPLOYEE RESTROOM ELEVATION 2
3 EMPLOYEE RESTROOM ELEVATION 3
4 EMPLOYEE RESTROOM ELEVATION 4
5 FAMILY RESTROOM ELEVATION 1
6 FAMILY RESTROOM ELEVATION 2
7 FAMILY RESTROOM ELEVATION 3
8 FAMILY RESTROOM ELEVATION 4
9 JANITOR ELEVATION 1
10 JANITOR ELEVATION 2
11 JANITOR ELEVATION 3
12 JANITOR ELEVATION 4



ARCHITECTURAL FIRM
 100 STATE ST. 4TH FLOOR
 PLATTSBURGH, NY 12156
 TEL: 518.532.1000
 FAX: 518.532.1001
 WWW.CITYOFPLATTSBURGH.COM

CONSTRUCTION DOCUMENT
 SERVICES 100%

CITY OF PLATTSBURGH-CITY BEACH
 TOILET FACILITIES
 4 BEACH ROAD, PLATTSBURGH, NEW YORK 12156, CLAYTON COUNTY

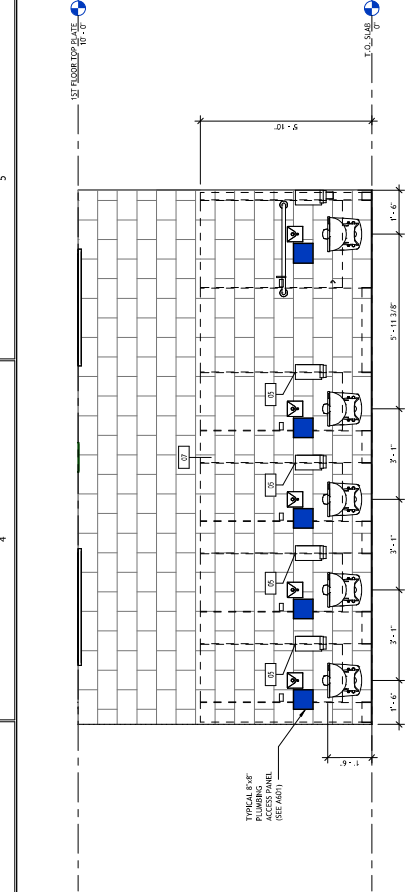


REVISIONS	
#	DATE

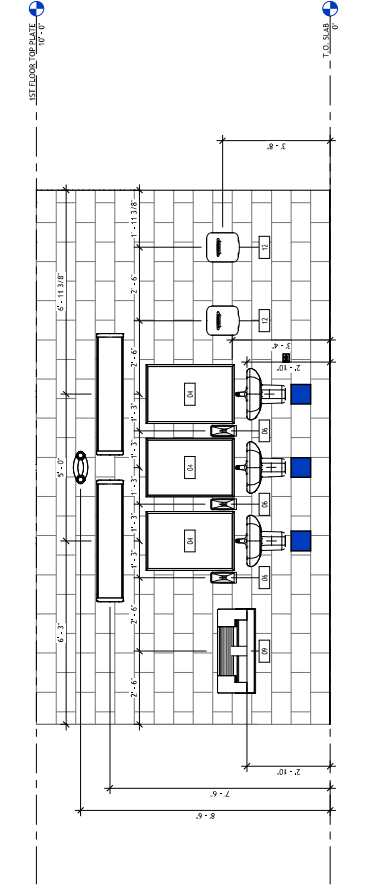
INTERIOR
 ELEVATIONS

PROJECT NO. 240011
 DATE 09-10-24
 DRAWN BY JCB
 CHECKED BY SEC

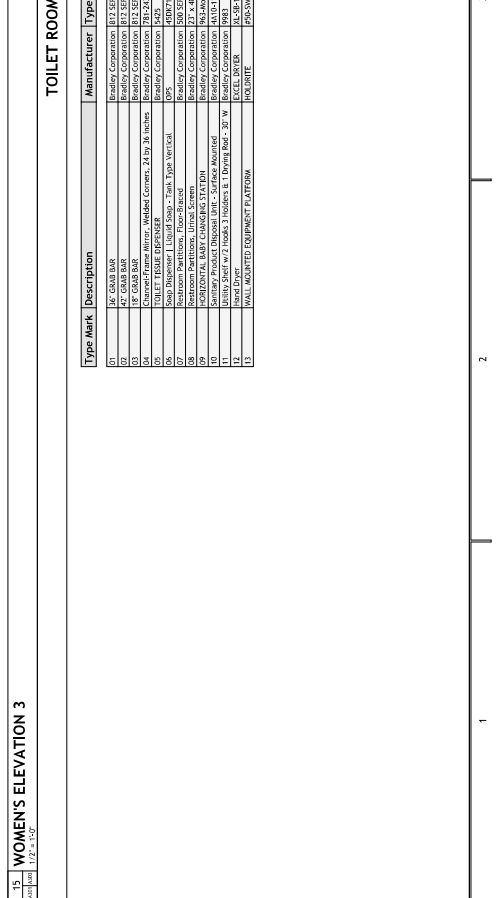
A303



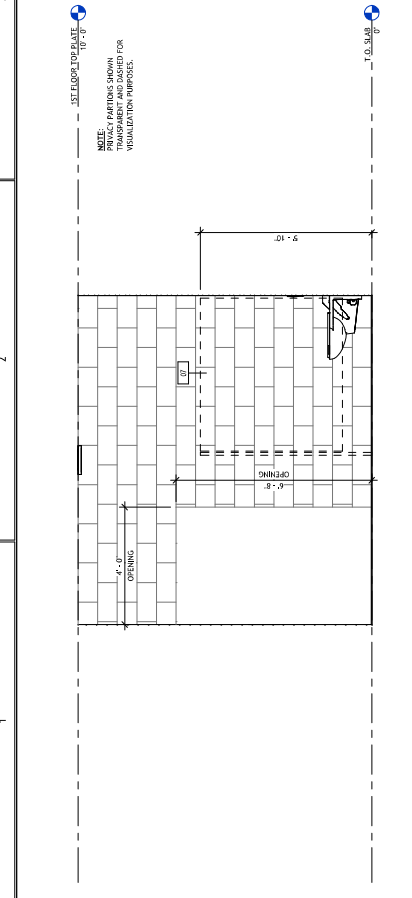
13 WOMEN'S ELEVATION 1
 1/2" = 1'-0"



14 WOMEN'S ELEVATION 2
 1/2" = 1'-0"



15 WOMEN'S ELEVATION 3
 1/2" = 1'-0"



16 TOILET ROOM ACCESSORIES
 1/2" = 1'-0"

Type/Mark	Description	Manufacturer	Type	Comments
01	1/2" GALV. BAR	BRANDY CORPORATION	1/2" SERIES 100-12	
02	1/2" GALV. BAR	BRANDY CORPORATION	1/2" SERIES 100-14	
03	1/2" GALV. BAR	BRANDY CORPORATION	1/2" SERIES 100-18	
04	Charred/Framed Mirror, Mirrored Corners, 24 1/2" H, 36 inches	BRANDY CORPORATION	1/2" SERIES 100-18	
05	Sink, Dispenser, Liquid Soap, Tank, Type Vertical	BRANDY CORPORATION	1/2" SERIES 100-18	
06	Bottom Partitions, Floor-to-ceiling	BRANDY CORPORATION	1/2" SERIES 100-18	
07	Secondary Product Disposal Unit - Surface Mounted	BRANDY CORPORATION	1/2" SERIES 100-18	
08	Secondary Product Disposal Unit - Surface Mounted	BRANDY CORPORATION	1/2" SERIES 100-18	
09	Secondary Product Disposal Unit - Surface Mounted	BRANDY CORPORATION	1/2" SERIES 100-18	
10	Secondary Product Disposal Unit - Surface Mounted	BRANDY CORPORATION	1/2" SERIES 100-18	
11	Secondary Product Disposal Unit - Surface Mounted	BRANDY CORPORATION	1/2" SERIES 100-18	
12	WALL MOUNTED EQUIPMENT PLATFORM	HOLDITITE	205-SMP-P-3W	PROVIDE AND INSTALL WITH MODEL ROPS & WALL GUARD



CITY OF PLATTSBURGH
 PLATTSBURGH, NEW YORK
 120 WEST 1ST STREET
 PLATTSBURGH, NY 12159
 TEL: 518.535.2000
 FAX: 518.535.2001
 WWW.CITYOFPLATTSBURGH.NY.GOV

CONSTRUCTION DOCUMENT
SERVICES 100K

CITY OF PLATTSBURGH-CITY BEACH
TOILET FACILITIES



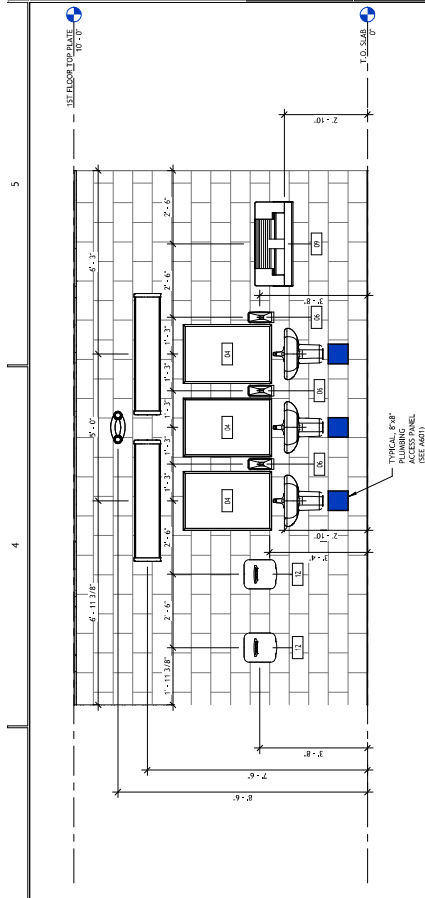
REVISIONS	
#	DATE

INTERIOR ELEVATIONS

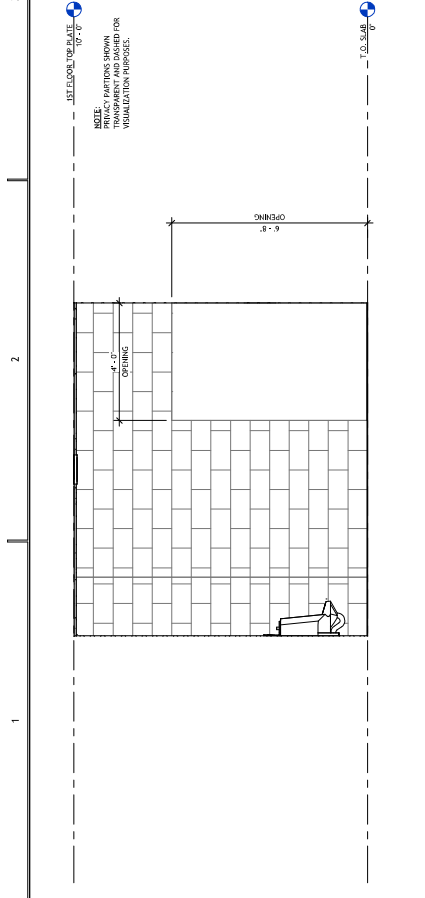
A304

PROJECT NO. 240011
 DATE 08-10-24
 DRAWN BY JCB
 CHECKED BY SEC

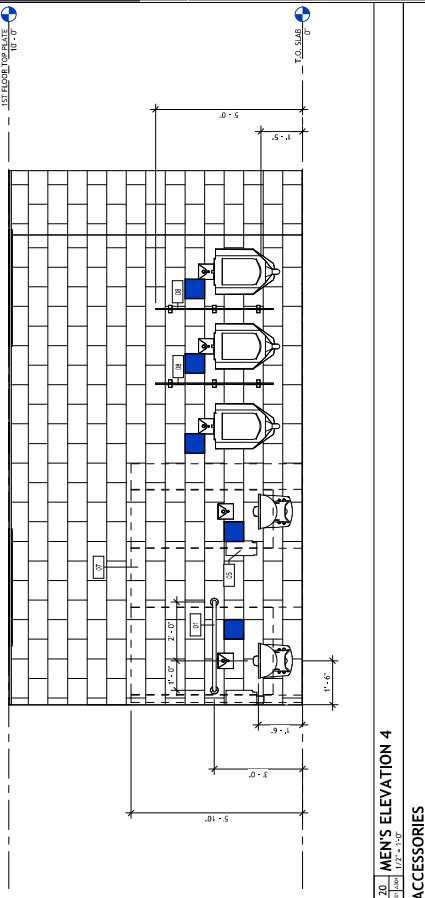
10/19/2024 2:25:03 PM



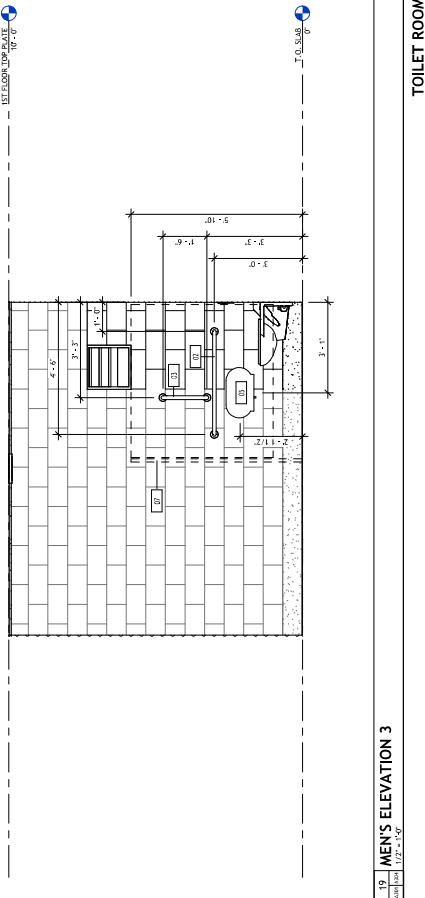
17 MEN'S ELEVATION 1
 1/2" = 1'-0"



18 MEN'S ELEVATION 2
 1/2" = 1'-0"



19 MEN'S ELEVATION 3
 1/2" = 1'-0"



20 MEN'S ELEVATION 4
 1/2" = 1'-0"

TOILET ROOM ACCESSORIES

Type Mark	Description	Manufacturer	Type	Comments
01	1" x 2" x 1/2" BRICK	Brickery Corporation	BRICK	BRICK
02	1/2" x 1/2" x 1/2" BRICK	Brickery Corporation	BRICK	BRICK
03	1/2" x 1/2" x 1/2" BRICK	Brickery Corporation	BRICK	BRICK
04	1" x 1" x 1/2" BRICK	Brickery Corporation	BRICK	BRICK
05	1" x 1" x 1/2" BRICK	Brickery Corporation	BRICK	BRICK
06	1" x 1" x 1/2" BRICK	Brickery Corporation	BRICK	BRICK
07	1" x 1" x 1/2" BRICK	Brickery Corporation	BRICK	BRICK
08	1" x 1" x 1/2" BRICK	Brickery Corporation	BRICK	BRICK
09	1" x 1" x 1/2" BRICK	Brickery Corporation	BRICK	BRICK
10	1" x 1" x 1/2" BRICK	Brickery Corporation	BRICK	BRICK
11	1" x 1" x 1/2" BRICK	Brickery Corporation	BRICK	BRICK
12	1" x 1" x 1/2" BRICK	Brickery Corporation	BRICK	BRICK
13	1" x 1" x 1/2" BRICK	Brickery Corporation	BRICK	BRICK



CITY OF PITTSBURGH
 PLANNING AND DEVELOPMENT DEPARTMENT
 1000 PENNSYLVANIA AVENUE, SUITE 1000
 PITTSBURGH, PA 15222-1000
 TEL: 412.326.1000
 FAX: 412.326.1001
 WWW.PITTSBURGH.GOV

**CITY OF PITTSBURGH-CITY BEACH
 TOILET FACILITIES**



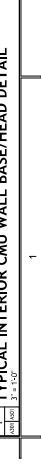
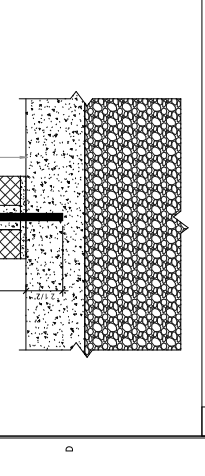
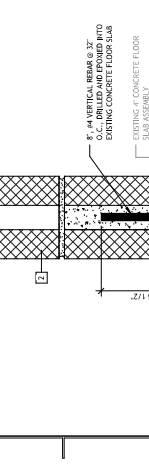
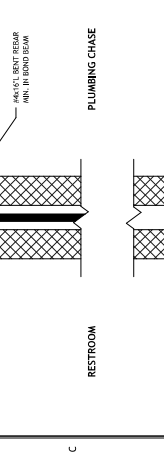
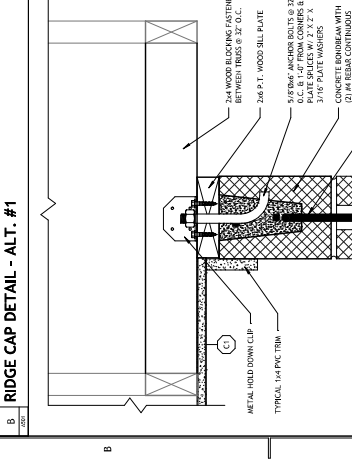
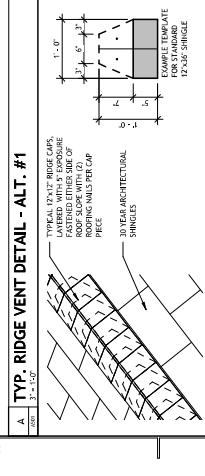
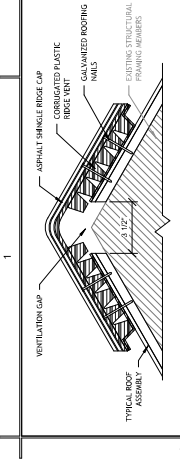
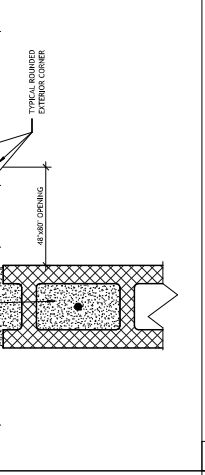
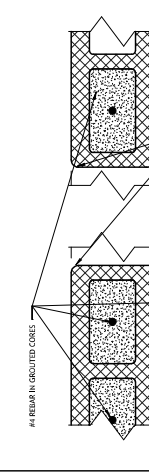
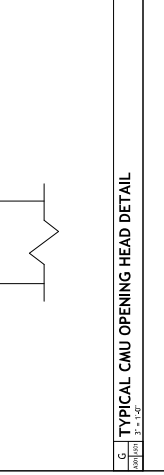
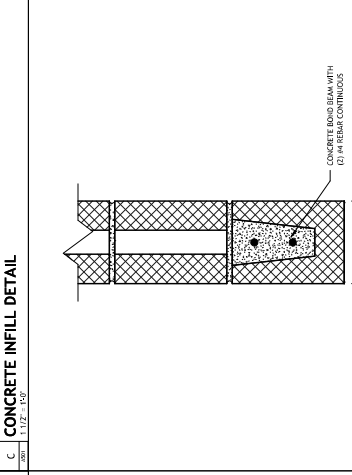
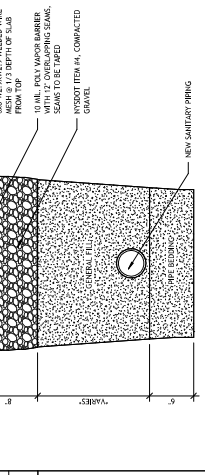
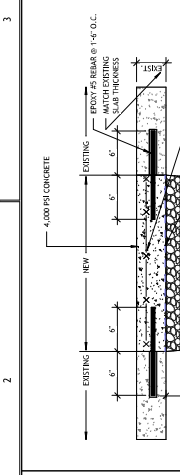
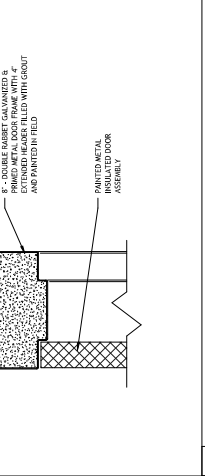
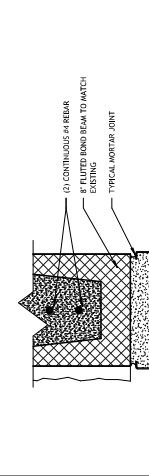
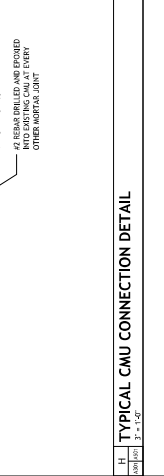
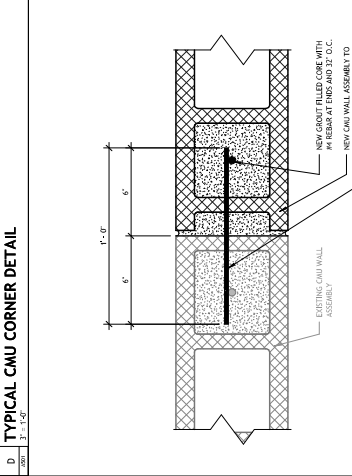
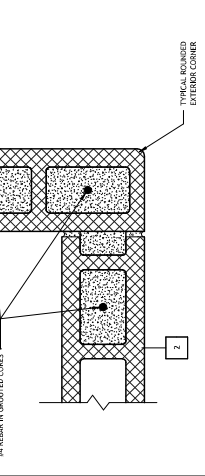
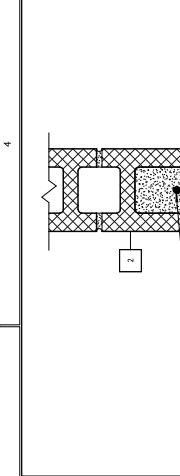
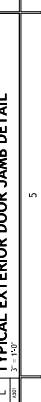
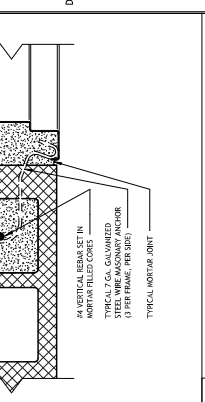
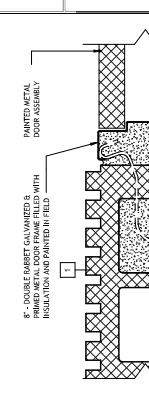
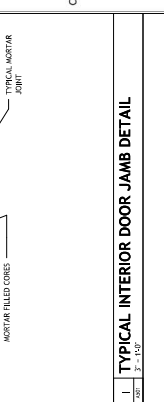
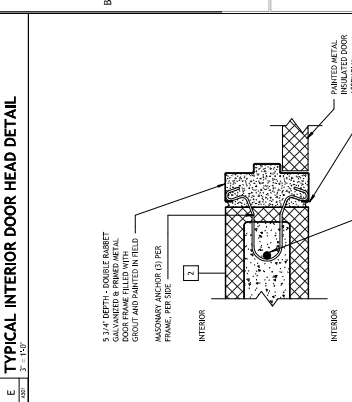
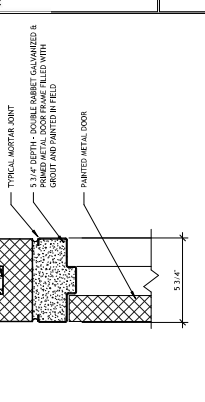
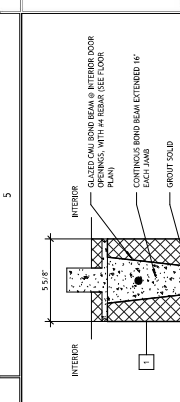
CONSTRUCTION DOCUMENT SERVICES 0006

REVISIONS	#	BY	DATE

DETAILS

PROJECT NO.	DATE	DESIGNED BY	CHECKED BY
24001	09-10-14	JEB	SEC

A501



CITY OF PLATTSBURGH, N.Y.
 PLATTSBURGH, N.Y. 12156
 518.535.2000
 WWW.PLATTSBURGH.NY.GOV

**CITY OF PLATTSBURGH-CITY BEACH
 TOILET FACILITIES**

4 BEACH ROAD, PLATTSBURGH, NEW YORK 12156, CLAYTON COUNTY

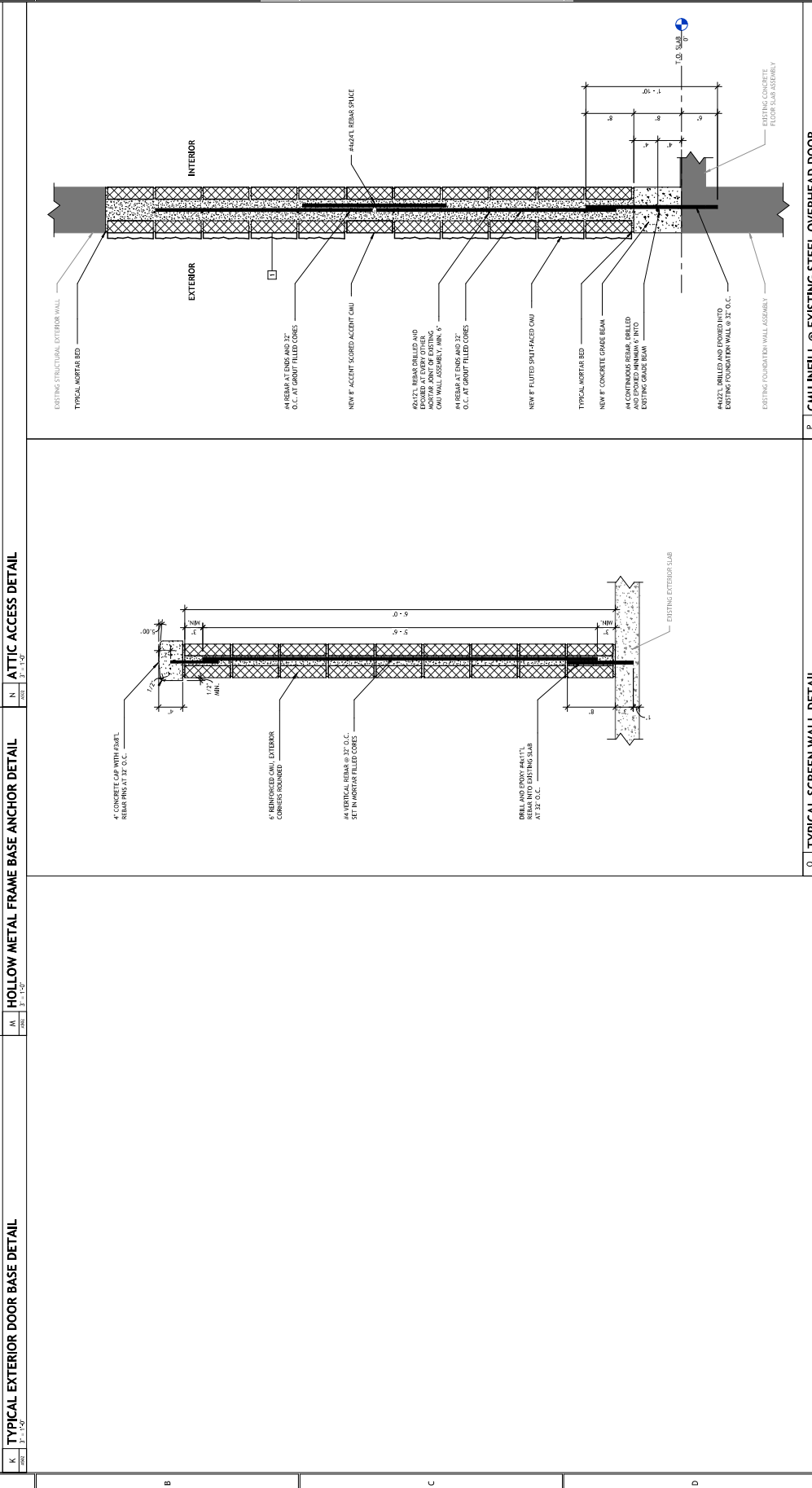
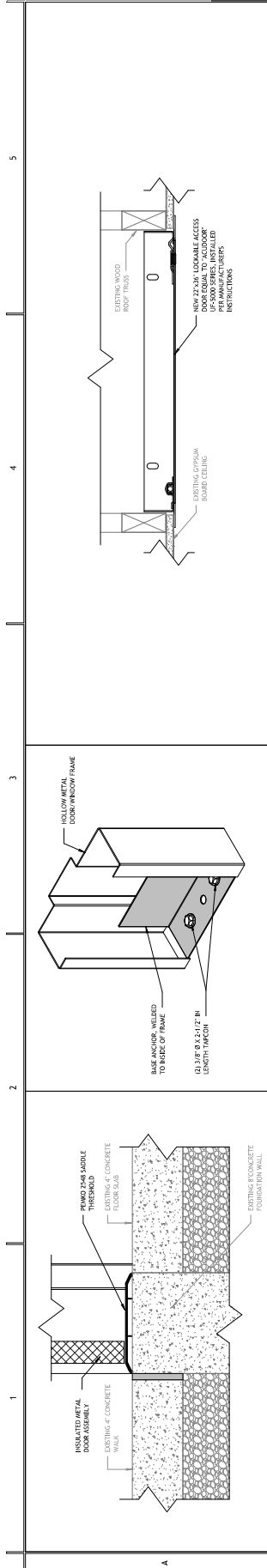
**CONSTRUCTION DOCUMENT
 SERVICES BOOK**

REVISIONS	#	BY	DATE

DETAILS

PROJECT NO.	24011
DATE	06-10-04
DRAWN BY	JCB
CHECKED BY	SEC

A502



CONSTRUCTION DOCUMENT SERVICES BOOK

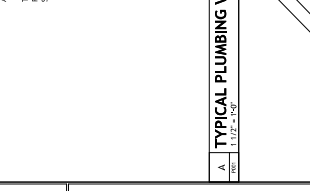
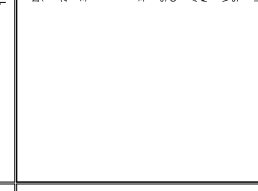
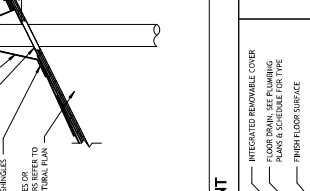
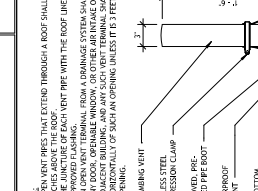
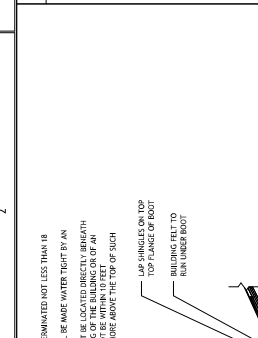
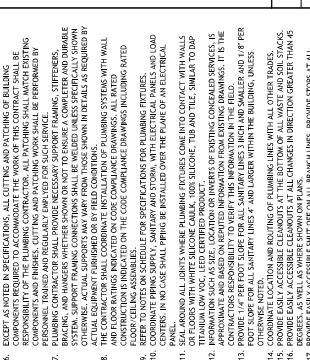
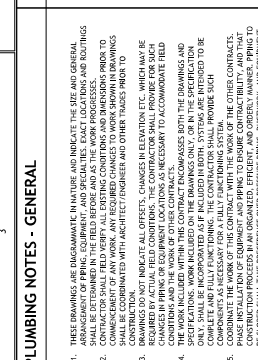
REVISIONS

#	BY	DATE

DETAILS

PROJECT NO.	24011
DATE	06-10-04
DRAWN BY	JCB
CHECKED BY	SEC

A502



#	BY	DATE	REVISIONS

PLUMBING - WATER CONSERVATION
 THE MAXIMUM WATER FLOW RATES AND FLUSH VOLUME FOR PLUMBING FIXTURES AND FIXTURE FITTINGS SHALL NOT EXCEED THE VALUES BELOW.

PLUMBING FIXTURES OR FIXTURE FITTINGS	MAXIMUM FLOW RATE OR QUANTITY
TOILET (W.C.)	2.0 GPM @ 150 PSI
TOILET (M.P.)	1.6 GPM @ 150 PSI
WATER CLOSING VALVE	0.5 GPM @ 150 PSI
WATER SAVING TOILET	1.2 GPM @ 150 PSI
WATER SAVING URINAL	0.5 GPM @ 150 PSI
WATER SAVING URINAL (W.C.)	1.6 GPM @ 150 PSI
WATER SAVING URINAL (M.P.)	1.2 GPM @ 150 PSI
WATER CLOSING VALVE	1.6 GPM @ 150 PSI

PLUMBING NOTES - DEMOLITION
 1. BEFORE ALL DEMOLITION IS INITIATED, THE CONTRACTOR SHALL BE RESPONSIBLE FOR THE PROTECTION OF ALL EXISTING PLUMBING AND ELECTRICAL SYSTEMS. ALL PLUMBING AND ELECTRICAL SYSTEMS SHALL BE PROTECTED PRIOR TO START OF DEMOLITION. COORDINATE WITH OWNERS AND ALL APPLICABLE REGULATORY AGENCIES.
 2. EXISTING PLUMBING OR ELECTRICAL SYSTEMS TO BE DEMOLISHED SHALL BE DEMOLISHED THROUGHOUT DEMOLITION PHASE.
 3. EXISTING PLUMBING OR ELECTRICAL SYSTEMS TO BE DEMOLISHED SHALL BE DEMOLISHED THROUGHOUT DEMOLITION PHASE.
 4. EXISTING PLUMBING OR ELECTRICAL SYSTEMS TO BE DEMOLISHED SHALL BE DEMOLISHED THROUGHOUT DEMOLITION PHASE.
 5. EXISTING PLUMBING OR ELECTRICAL SYSTEMS TO BE DEMOLISHED SHALL BE DEMOLISHED THROUGHOUT DEMOLITION PHASE.
 6. EXISTING PLUMBING OR ELECTRICAL SYSTEMS TO BE DEMOLISHED SHALL BE DEMOLISHED THROUGHOUT DEMOLITION PHASE.
 7. EXISTING PLUMBING OR ELECTRICAL SYSTEMS TO BE DEMOLISHED SHALL BE DEMOLISHED THROUGHOUT DEMOLITION PHASE.
 8. EXISTING PLUMBING OR ELECTRICAL SYSTEMS TO BE DEMOLISHED SHALL BE DEMOLISHED THROUGHOUT DEMOLITION PHASE.
 9. EXISTING PLUMBING OR ELECTRICAL SYSTEMS TO BE DEMOLISHED SHALL BE DEMOLISHED THROUGHOUT DEMOLITION PHASE.
 10. EXISTING PLUMBING OR ELECTRICAL SYSTEMS TO BE DEMOLISHED SHALL BE DEMOLISHED THROUGHOUT DEMOLITION PHASE.
 11. EXISTING PLUMBING OR ELECTRICAL SYSTEMS TO BE DEMOLISHED SHALL BE DEMOLISHED THROUGHOUT DEMOLITION PHASE.
 12. EXISTING PLUMBING OR ELECTRICAL SYSTEMS TO BE DEMOLISHED SHALL BE DEMOLISHED THROUGHOUT DEMOLITION PHASE.
 13. EXISTING PLUMBING OR ELECTRICAL SYSTEMS TO BE DEMOLISHED SHALL BE DEMOLISHED THROUGHOUT DEMOLITION PHASE.
 14. EXISTING PLUMBING OR ELECTRICAL SYSTEMS TO BE DEMOLISHED SHALL BE DEMOLISHED THROUGHOUT DEMOLITION PHASE.
 15. EXISTING PLUMBING OR ELECTRICAL SYSTEMS TO BE DEMOLISHED SHALL BE DEMOLISHED THROUGHOUT DEMOLITION PHASE.
 16. EXISTING PLUMBING OR ELECTRICAL SYSTEMS TO BE DEMOLISHED SHALL BE DEMOLISHED THROUGHOUT DEMOLITION PHASE.
 17. EXISTING PLUMBING OR ELECTRICAL SYSTEMS TO BE DEMOLISHED SHALL BE DEMOLISHED THROUGHOUT DEMOLITION PHASE.
 18. EXISTING PLUMBING OR ELECTRICAL SYSTEMS TO BE DEMOLISHED SHALL BE DEMOLISHED THROUGHOUT DEMOLITION PHASE.
 19. EXISTING PLUMBING OR ELECTRICAL SYSTEMS TO BE DEMOLISHED SHALL BE DEMOLISHED THROUGHOUT DEMOLITION PHASE.
 20. EXISTING PLUMBING OR ELECTRICAL SYSTEMS TO BE DEMOLISHED SHALL BE DEMOLISHED THROUGHOUT DEMOLITION PHASE.
 21. EXISTING PLUMBING OR ELECTRICAL SYSTEMS TO BE DEMOLISHED SHALL BE DEMOLISHED THROUGHOUT DEMOLITION PHASE.
 22. EXISTING PLUMBING OR ELECTRICAL SYSTEMS TO BE DEMOLISHED SHALL BE DEMOLISHED THROUGHOUT DEMOLITION PHASE.
 23. EXISTING PLUMBING OR ELECTRICAL SYSTEMS TO BE DEMOLISHED SHALL BE DEMOLISHED THROUGHOUT DEMOLITION PHASE.
 24. EXISTING PLUMBING OR ELECTRICAL SYSTEMS TO BE DEMOLISHED SHALL BE DEMOLISHED THROUGHOUT DEMOLITION PHASE.
 25. EXISTING PLUMBING OR ELECTRICAL SYSTEMS TO BE DEMOLISHED SHALL BE DEMOLISHED THROUGHOUT DEMOLITION PHASE.
 26. EXISTING PLUMBING OR ELECTRICAL SYSTEMS TO BE DEMOLISHED SHALL BE DEMOLISHED THROUGHOUT DEMOLITION PHASE.
 27. EXISTING PLUMBING OR ELECTRICAL SYSTEMS TO BE DEMOLISHED SHALL BE DEMOLISHED THROUGHOUT DEMOLITION PHASE.
 28. EXISTING PLUMBING OR ELECTRICAL SYSTEMS TO BE DEMOLISHED SHALL BE DEMOLISHED THROUGHOUT DEMOLITION PHASE.
 29. EXISTING PLUMBING OR ELECTRICAL SYSTEMS TO BE DEMOLISHED SHALL BE DEMOLISHED THROUGHOUT DEMOLITION PHASE.
 30. EXISTING PLUMBING OR ELECTRICAL SYSTEMS TO BE DEMOLISHED SHALL BE DEMOLISHED THROUGHOUT DEMOLITION PHASE.
 31. EXISTING PLUMBING OR ELECTRICAL SYSTEMS TO BE DEMOLISHED SHALL BE DEMOLISHED THROUGHOUT DEMOLITION PHASE.

PLUMBING FIXTURE LEGEND
 WALL MOUNTED - FLUSH VALVE TOILET
 FLOOR MOUNTED - TOILET WITH TANK
 WALL MOUNTED - LAVATORY
 UTILITY SINK
 AOP SINK, 5'-0" x 3'-0"
 FLOOR MOUNTED SINK WITH WALL MOUNTED FAUCET
 BATH TUB, 5'-0" x 7'-0"
 BATH TUB, 5'-0" x 5'-0", ROLL-IN TYPE
 SHOWER, 5'-0" x 5'-0"
 ADA COMPLIANT HIGH/LOW DRINKING FOUNTAIN
 HOT WATER HEATER - TANK TYPE
 HOT WATER HEATER - TANKLESS
 FLOOR CLEANOUT
 FLOOR DRAIN

PLUMBING PIPING LEGEND
 SANITARY WASTE, SCHEDULE 80
 COLD WATER CONNECTION, SCHEDULE 80 SWEET, SCHEDULE 80
 SHUT OFF VALVE
 HOT WATER CONNECTION, SCHEDULE 80
 DEMOLISHED EXISTING SANITARY WASTE SYSTEM
 EXISTING SANITARY WASTE SYSTEM
 PROPOSED SANITARY WASTE SYSTEM
 DOMESTIC HOT WATER SUPPLY
 DOMESTIC COLD WATER SUPPLY
 SECTION THROUGH VERTICAL PORTION OF PIPE

PLUMBING NOTES - GENERAL
 1. THESE DRAWINGS ARE FOR INFORMATION IN PLACE AND INDICATE THE SIZE AND GENERAL ARRANGEMENT OF PIPING, EQUIPMENT, AND SPECIALS. EXACT LOCATIONS AND DIMENSIONS SHALL BE DETERMINED IN THE FIELD. THE CONTRACTOR SHALL BE RESPONSIBLE FOR THE PROTECTION OF ALL EXISTING PLUMBING AND ELECTRICAL SYSTEMS. ALL PLUMBING AND ELECTRICAL SYSTEMS SHALL BE PROTECTED PRIOR TO START OF DEMOLITION. COORDINATE WITH OWNERS AND ALL APPLICABLE REGULATORY AGENCIES.
 2. EXISTING PLUMBING OR ELECTRICAL SYSTEMS TO BE DEMOLISHED SHALL BE DEMOLISHED THROUGHOUT DEMOLITION PHASE.
 3. EXISTING PLUMBING OR ELECTRICAL SYSTEMS TO BE DEMOLISHED SHALL BE DEMOLISHED THROUGHOUT DEMOLITION PHASE.
 4. EXISTING PLUMBING OR ELECTRICAL SYSTEMS TO BE DEMOLISHED SHALL BE DEMOLISHED THROUGHOUT DEMOLITION PHASE.
 5. EXISTING PLUMBING OR ELECTRICAL SYSTEMS TO BE DEMOLISHED SHALL BE DEMOLISHED THROUGHOUT DEMOLITION PHASE.
 6. EXISTING PLUMBING OR ELECTRICAL SYSTEMS TO BE DEMOLISHED SHALL BE DEMOLISHED THROUGHOUT DEMOLITION PHASE.
 7. EXISTING PLUMBING OR ELECTRICAL SYSTEMS TO BE DEMOLISHED SHALL BE DEMOLISHED THROUGHOUT DEMOLITION PHASE.
 8. EXISTING PLUMBING OR ELECTRICAL SYSTEMS TO BE DEMOLISHED SHALL BE DEMOLISHED THROUGHOUT DEMOLITION PHASE.
 9. EXISTING PLUMBING OR ELECTRICAL SYSTEMS TO BE DEMOLISHED SHALL BE DEMOLISHED THROUGHOUT DEMOLITION PHASE.
 10. EXISTING PLUMBING OR ELECTRICAL SYSTEMS TO BE DEMOLISHED SHALL BE DEMOLISHED THROUGHOUT DEMOLITION PHASE.
 11. EXISTING PLUMBING OR ELECTRICAL SYSTEMS TO BE DEMOLISHED SHALL BE DEMOLISHED THROUGHOUT DEMOLITION PHASE.
 12. EXISTING PLUMBING OR ELECTRICAL SYSTEMS TO BE DEMOLISHED SHALL BE DEMOLISHED THROUGHOUT DEMOLITION PHASE.
 13. EXISTING PLUMBING OR ELECTRICAL SYSTEMS TO BE DEMOLISHED SHALL BE DEMOLISHED THROUGHOUT DEMOLITION PHASE.
 14. EXISTING PLUMBING OR ELECTRICAL SYSTEMS TO BE DEMOLISHED SHALL BE DEMOLISHED THROUGHOUT DEMOLITION PHASE.
 15. EXISTING PLUMBING OR ELECTRICAL SYSTEMS TO BE DEMOLISHED SHALL BE DEMOLISHED THROUGHOUT DEMOLITION PHASE.
 16. EXISTING PLUMBING OR ELECTRICAL SYSTEMS TO BE DEMOLISHED SHALL BE DEMOLISHED THROUGHOUT DEMOLITION PHASE.
 17. EXISTING PLUMBING OR ELECTRICAL SYSTEMS TO BE DEMOLISHED SHALL BE DEMOLISHED THROUGHOUT DEMOLITION PHASE.
 18. EXISTING PLUMBING OR ELECTRICAL SYSTEMS TO BE DEMOLISHED SHALL BE DEMOLISHED THROUGHOUT DEMOLITION PHASE.
 19. EXISTING PLUMBING OR ELECTRICAL SYSTEMS TO BE DEMOLISHED SHALL BE DEMOLISHED THROUGHOUT DEMOLITION PHASE.
 20. EXISTING PLUMBING OR ELECTRICAL SYSTEMS TO BE DEMOLISHED SHALL BE DEMOLISHED THROUGHOUT DEMOLITION PHASE.
 21. EXISTING PLUMBING OR ELECTRICAL SYSTEMS TO BE DEMOLISHED SHALL BE DEMOLISHED THROUGHOUT DEMOLITION PHASE.
 22. EXISTING PLUMBING OR ELECTRICAL SYSTEMS TO BE DEMOLISHED SHALL BE DEMOLISHED THROUGHOUT DEMOLITION PHASE.
 23. EXISTING PLUMBING OR ELECTRICAL SYSTEMS TO BE DEMOLISHED SHALL BE DEMOLISHED THROUGHOUT DEMOLITION PHASE.
 24. EXISTING PLUMBING OR ELECTRICAL SYSTEMS TO BE DEMOLISHED SHALL BE DEMOLISHED THROUGHOUT DEMOLITION PHASE.
 25. EXISTING PLUMBING OR ELECTRICAL SYSTEMS TO BE DEMOLISHED SHALL BE DEMOLISHED THROUGHOUT DEMOLITION PHASE.
 26. EXISTING PLUMBING OR ELECTRICAL SYSTEMS TO BE DEMOLISHED SHALL BE DEMOLISHED THROUGHOUT DEMOLITION PHASE.
 27. EXISTING PLUMBING OR ELECTRICAL SYSTEMS TO BE DEMOLISHED SHALL BE DEMOLISHED THROUGHOUT DEMOLITION PHASE.
 28. EXISTING PLUMBING OR ELECTRICAL SYSTEMS TO BE DEMOLISHED SHALL BE DEMOLISHED THROUGHOUT DEMOLITION PHASE.
 29. EXISTING PLUMBING OR ELECTRICAL SYSTEMS TO BE DEMOLISHED SHALL BE DEMOLISHED THROUGHOUT DEMOLITION PHASE.
 30. EXISTING PLUMBING OR ELECTRICAL SYSTEMS TO BE DEMOLISHED SHALL BE DEMOLISHED THROUGHOUT DEMOLITION PHASE.
 31. EXISTING PLUMBING OR ELECTRICAL SYSTEMS TO BE DEMOLISHED SHALL BE DEMOLISHED THROUGHOUT DEMOLITION PHASE.



ARCHITECTURAL ENGINEERING
 PLATTSBURGH, N.Y.
 11959
 1110 WEST MAIN
 1110 WEST MAIN
 PLATTSBURGH, N.Y. 11959
 TEL: 315.352.5000
 FAX: 315.352.5000
 E: LEONARDO@LSE.COM

CITY OF PLATTSBURGH-CITY BEACH
 TOILET FACILITIES



CONSTRUCTION DOCUMENT SERVICES 100%

REVISIONS	#	BY	DATE

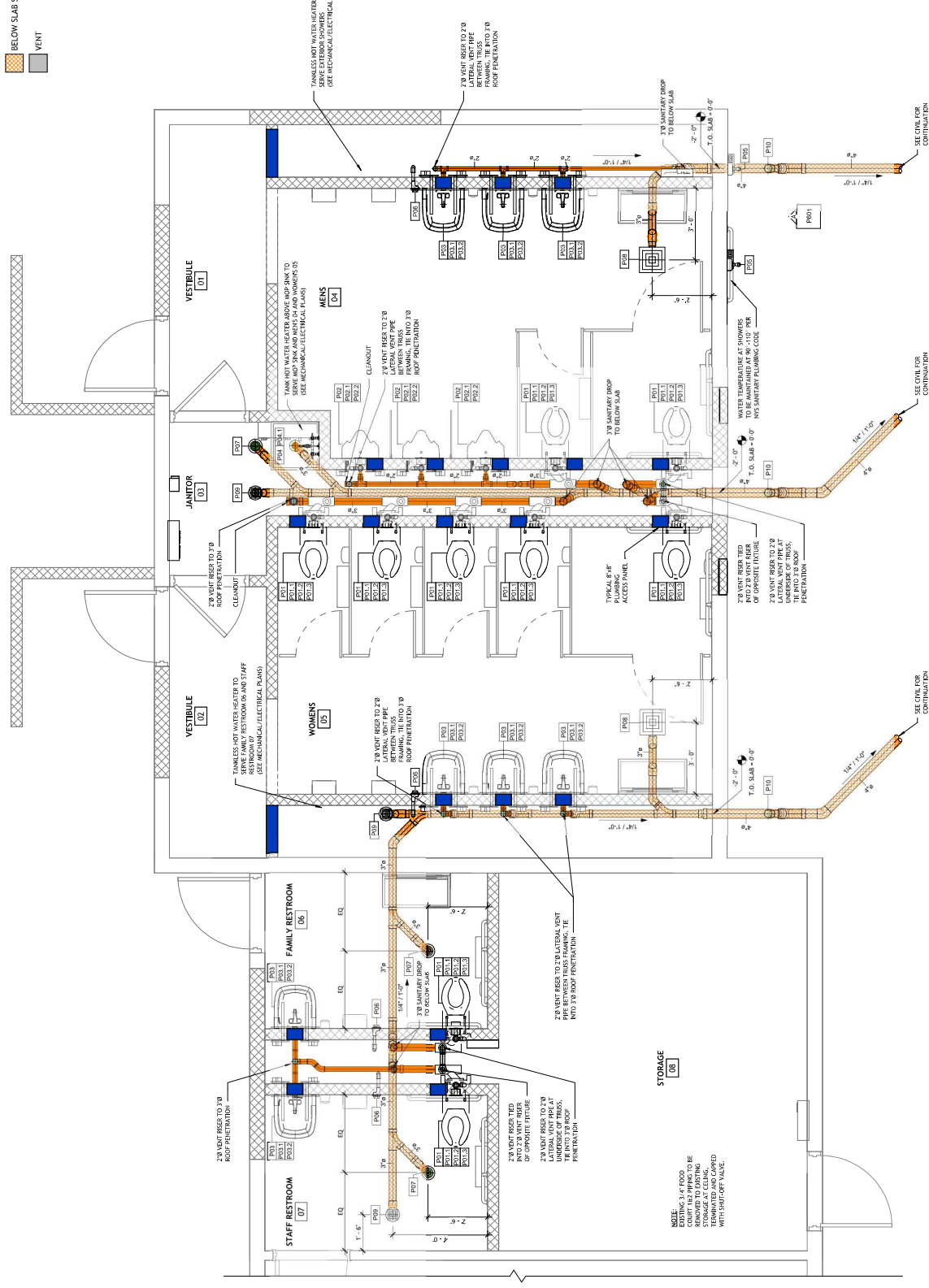
ENLARGED SANITARY WASTE & VENT PIPING

PROJECT NO. 24011
 DATE 09-10-24
 DRAWN BY JCB
 CHECKED BY SEC

P101

Pipe Color Fill Legend

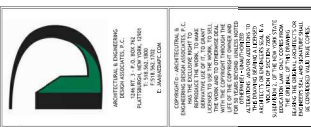
- ABOVE SLAB SANITARY
- BELOW SLAB SANITARY
- VENT



NOTE:
 EXISTING 3/4\"/>

1 ENLARGED SANITARY WASTE & VENT PIPING

DATE 11/27/12



CITY OF PLATTSBURGH-CITY BEACH TOILET FACILITIES

4 BEACH ROAD, PLATTSBURGH, NEW YORK 12561, CLAYTON COUNTY



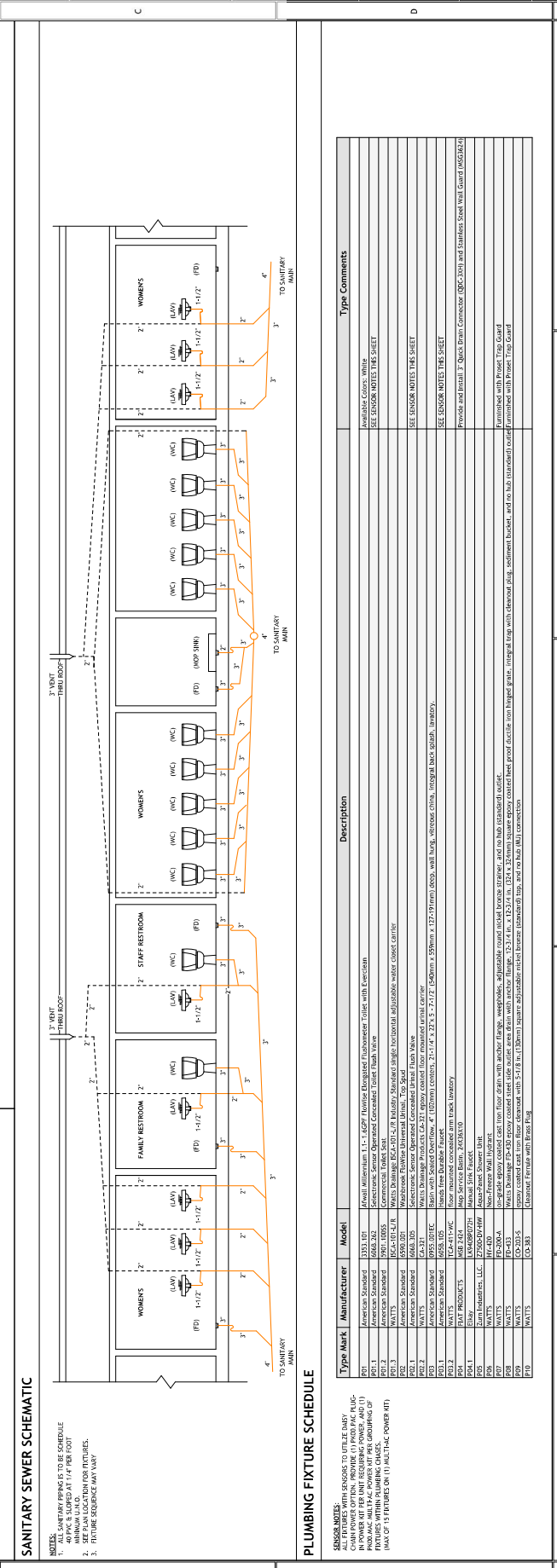
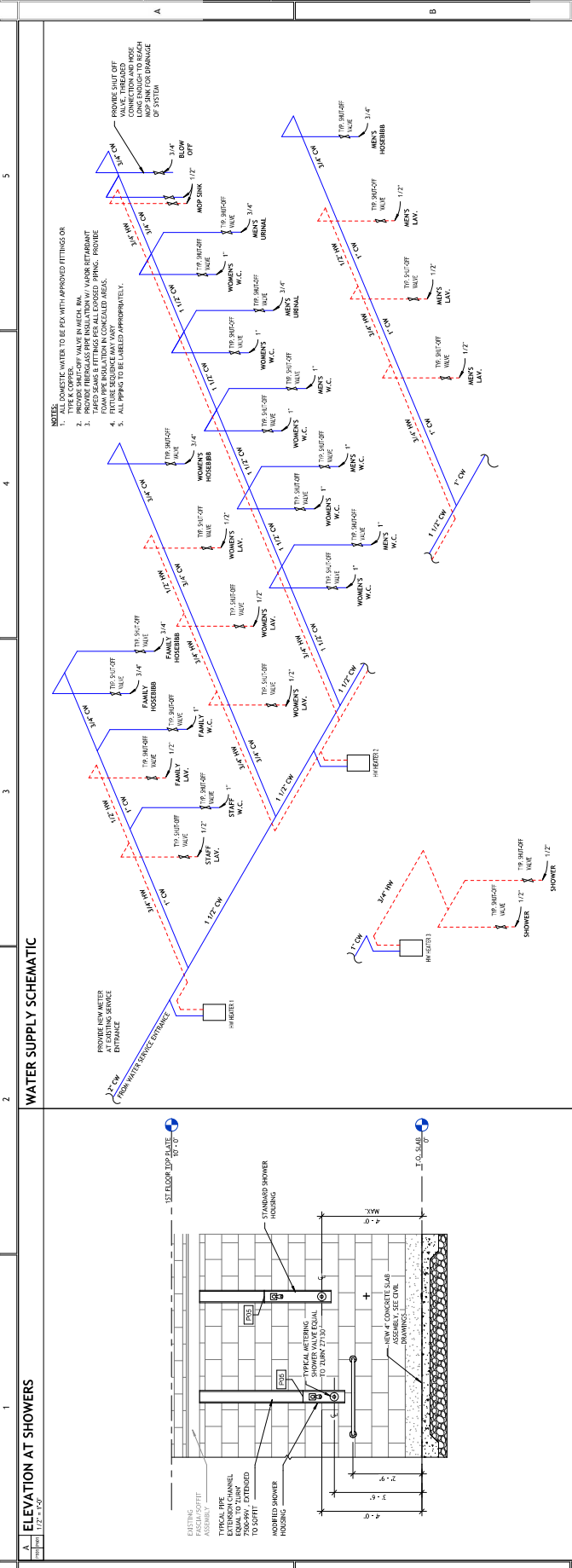
CONSTRUCTION DOCUMENT SERVICES 100K

REVISIONS	#	BY	DATE

PLUMBING SCHEDULES & SCHEMATICS

PROJECT NO. 24001
DATE 06-10-24
DRAWN BY JCB
CHECKED BY SEC

P601





APPROVED FOR THE CITY OF PLATTSBURGH
 ENGINEERED MECHANICAL/ELECTRICAL SERVICES
 1100 STATE ST. SUITE 200
 PLATTSBURGH, NY 12156-3500
 TEL: 518.535.4400
 FAX: 518.535.4401
 WWW.EMESERVICES.COM

**CITY OF PLATTSBURGH-CITY BEACH
 TOILET FACILITIES**

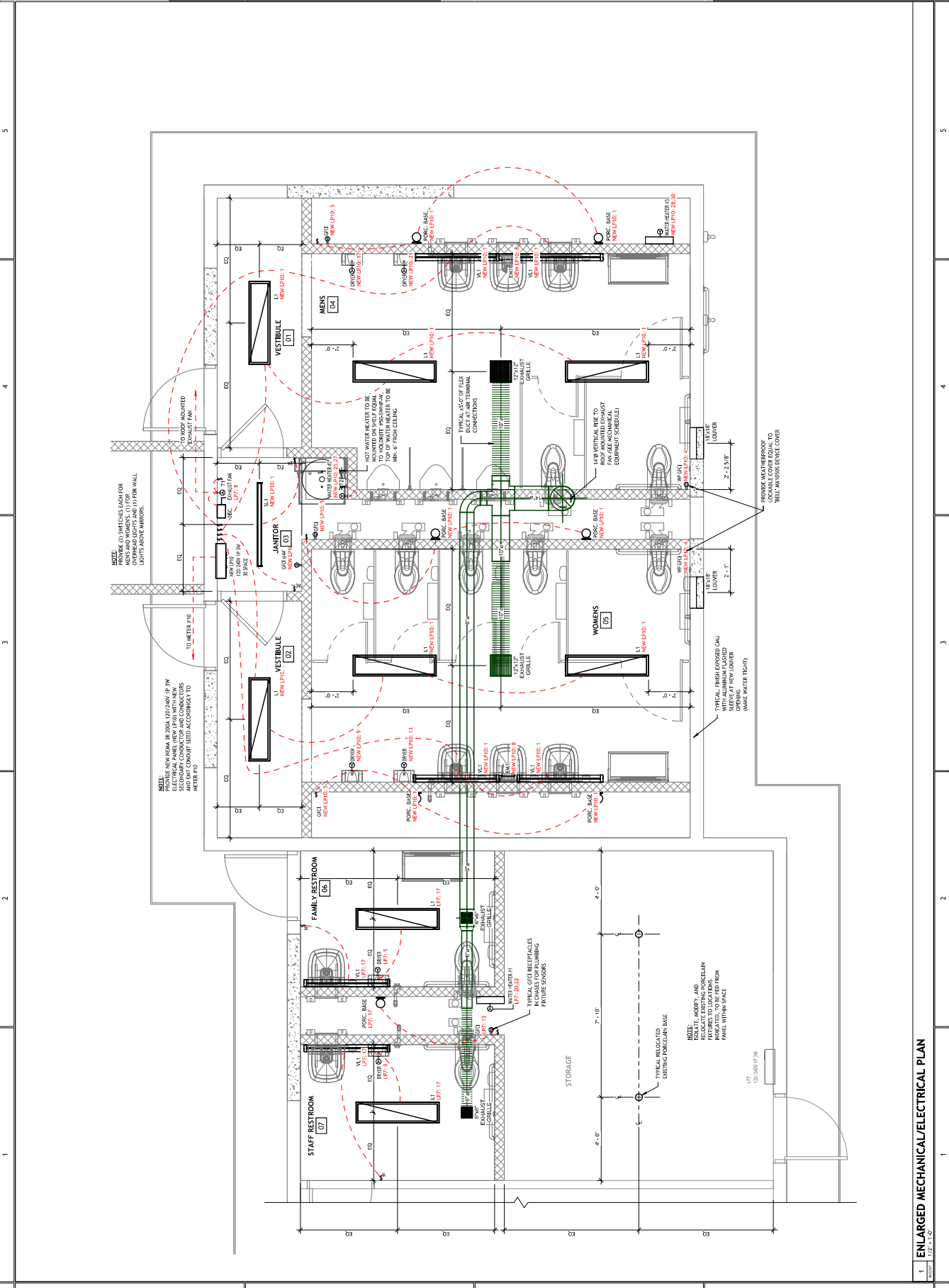
**CONSTRUCTION DOCUMENT
 MECHANICAL/ELECTRICAL
 SERVICES 100K**

REVISIONS

#	BY	DATE

ENLARGED MECHANICAL/ELECTRICAL PLAN

PROJECT NO. 24001
 DATE 09-10-24
 DRAWN BY JCB
 CHECKED BY SEC
M/E101



1 ENLARGED MECHANICAL/ELECTRICAL PLAN

